



i-novative® GmbH

Kesselbodenstraße 11
D-85391 Allershausen

Tel.: +49 8166 / 582 91 40
Fax: +49 8166 / 582 91 70



Web: www.i-novative.de
E-mail: info@i-novative.de



I-NOVATIVE ©

beyond tomorrow

Auto-Link-SPE-G (1000BASE-T1 Media Converter)

The Auto-Link-SPE-G easily connects 1000BASE-T1 and 1000BASE-T networks.



- 1000BASE-T1 Port (Molex Mini50 4pos)
- 1000BASE-T Port (RJ45)
- USB-C Port (Firmware Update & Configuration)
- Link/Activity LEDs for both LAN-ports
- Master/Slave and Speed (1000/100) Setting via DIP switch
- Automatic Master/Slave detection
- Operating range: 5V - 28V DC (Molex Mini50 2pos) / 5V (USB-C)
- Power consumption: < 150mA @ 12V
- Dimensions: 70 x 75 x 35 mm
- Robust aluminium housing
- Suitable for in-vehicle use

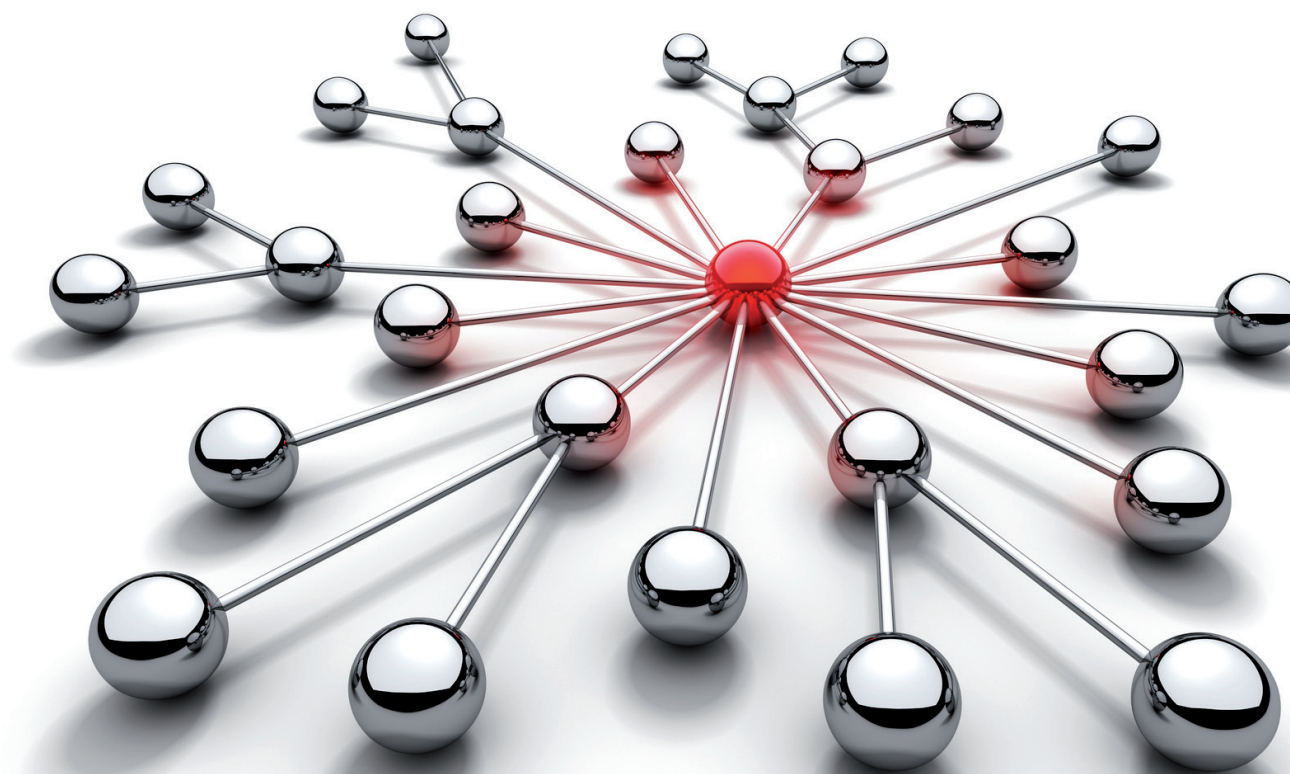
100BASE-T1 Media Converter

The cost efficient 100BASE-T1 Media Converter easily connects 100BASE-T1 and 100BASE-TX networks.



- 100BASE-T1 Port (Molex Mini50)
- 100BASE-TX Port (RJ45)
- Mini-USB Port (Firmware Update & Configuration)
- Link/Activity LEDs for both network ports
- Master/Slave role switch via DIP switch
- Automatic Master/Slave detection
- Operating range: 5V - 28V DC (Main Conn) / 5V (USB)
- Current consumption: < 50mA @ 12V
- Dimensions: 70 x 75 x 35 mm
- Robust aluminium housing
- Suitable for in-vehicle use

Product-Information



OABR Multi-Media Switch



Description

The OABR Multi-Media Switch easily connects OABR and Fast Ethernet networks. FE access is provided directly and via a built-in USB-ETH bridge. The switch supports VLAN tagging and port mirroring which can be controlled by the provided graphical UI. It also includes a CAN monitor and a Wake-up Line.

Technical Data

- 1x High-Speed CAN (up to 1MBit)
- 2x OABR BroadReach® Port
- 1 Port Fast Ethernet (100BASE-TX)
- 1 Port USB to Ethernet (100 MBit/s via USB2.0)
- 1 Port USB-B (Configuration & FW update)
- Operating voltage: 8 to 16 Volt DC
- Dimensions: 120 x 80 x 35 mm
- Robust, EMI optimized aluminium body
- Automotive grade
- Life-Cycle management functions
- Simple Firmware update via GUI
- Tyco automotive Lock-Connector
- GUI Configuration of Master/Slave, HDX/FDX, Port Forwarding, Mirroring, VLAN Tagging, CAN Settings, Wake-up Settings

CAN2CAN Router



Description

The CAN2CAN Router is a multipurpose device for routing and gateway applications. Equipped with up to five CAN interfaces and up to four 1-wire buses (i.e. LIN, K-Line) are also supported. Any gateway functions as well as filtering- and blocking-functions can be implemented.

Technical Data

- 4x High-Speed CAN (up to 1MBit)
- 1x (optional) High-Speed (up to 1MBit) or Low-Speed CAN (up to 125KBit)
- 4x (optional) 1-wire buses (i.e. LIN, K-Line)
- 1 Port USB-B (FW update)
- 1x (optional) Fast Ethernet (100BASE-TX)
- Operating voltage: 5 to 26 Volt DC
- Dimensions: 120 x 80 x 35 mm
- Robust, EMI optimized aluminium body
- Automotive grade
- Life-Cycle management functions
- Simple Firmware update via GUI
- Tyco automotive Lock-Connector

FlexRay2FlexRay Router



Description

The FlexRay2FlexRay Router is a multipurpose device for routing and gateway applications. Equipped with 2 FlexRay nodes and up to 4 CAN interfaces, gateway functions as well as filtering- and blocking-functions can be implemented.

Technical Data

- 4x High-Speed CAN (up to 1MBit)
- 2x FlexRay (with vehicle decoupling) single channel
- 1 Port USB-B (FW update)
- Operating voltage: 5 to 26 Volt DC
- Dimensions: 120 x 80 x 35 mm
- Robust, EMI optimized aluminium body
- Automotive grade
- Life-Cycle management functions
- Simple Firmware update via GUI
- Tyco automotive Lock-Connector

Multi-CAN Gateway



Description

The Multi-CAN Gateway is a multipurpose device for routing and gateway applications. Equipped with a total of 14 High-Speed CANs, 1 Low-Speed CAN, 1 OABR interface and 2 LIN interfaces. It allows creation of flexible routing and special gateway functions as well as filtering-and blocking.

Technical Data

- 14x High-Speed CAN (up to 1MBit)
- 1x Low-Speed CAN (125k)
- 2x (optional) LIN Nodes
- 1x OABR BroadReach® Port
- 1 Port USB-B (FW update)
- 1 Port USB-A (for USB Stick expansion)
- Operating voltage: 5 to 26 Volt DC
- Dimensions: 240 x 120 x 35 mm
- Robust, EMI optimized aluminium body
- Automotive grade
- Life-Cycle management functions
- Simple Firmware update via GUI
- Tyco automotive Lock-Connector